

**HIGH QUALITY DURABLE MATERIALS**

Manufactured from UV Stabilised High Quality Glass Fibre Reinforced Nylon and Nitrile Rubber O-Ring giving a weather, termite, fungi and bacterial resistance



**STRONG COMPACT DESIGN**

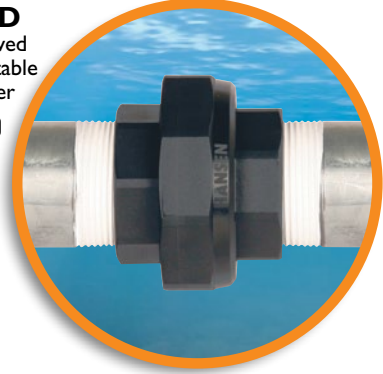
The compact design of the Hansen Quick Connect Barrel Union makes it especially suited to tight spaces where there is very little room for movement when connecting and disconnecting pump or pipe.



**POTABLE WATER APPROVED**

Materials approved for use with Potable (drinkable) Water

AS/NZS 4020



**O-RING SEAL**

For a leak proof connection.

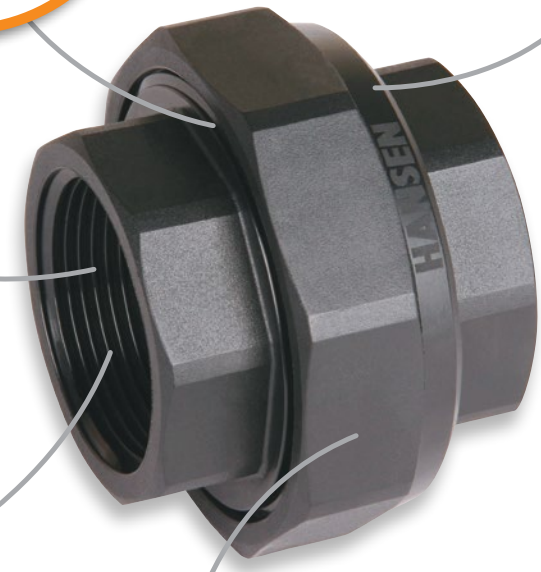
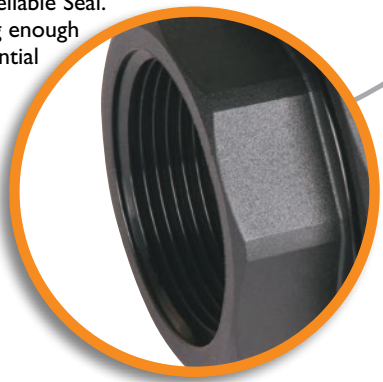


**MAXIMUM WORKING PRESSURE**

16 Bar (235 psi)  
@ 20°C

**PRECISION HEAVY DUTY TAPERED THREADS**

Gives a Strong Reliable Seal. Material is strong enough to minimise potential cross threading.

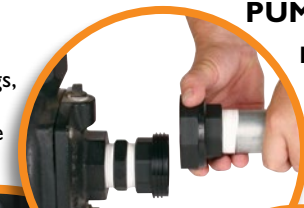


**EASY TO USE**

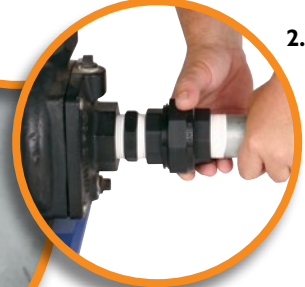
As with all Hansen fittings, simplicity & ease of use remain at the core of the Hansen Quick Connect Barrel Union.

**PUMP TO PIPE**

1. Disconnect current pipe from pump by unwinding the Common Centre Nut



2. Connect the new pipe to pump by winding the Common Centre Nut onto the matching male thread



**EASY SLIP DOWN ACTION**

The easy slip down action makes uninstalling pumps & pipe work a breeze! When the common nut is wound off, the pipe simply 'slips down' with virtually no extra forward or backward movement required to separate the connection.



**PIPE TO PIPE**

1. Disconnect current pipe by unwinding the Common Centre Nut



2. Connect new pipe to pipe by winding the Common Centre Nut onto the matching male thread

**Available in Sizes:**

15mm, 20mm, 25mm, 32mm, 40mm, 50mm, 25x20mm, 32x25mm (1/2", 3/4", 1", 1-1/4", 1-1/2", 2", 1"x3/4", 1-1/4"x1")



**Strong, Compact and Easy to Use Unions**

[www.hansenproducts.com](http://www.hansenproducts.com)